



SPAN

SPAN ELEVATORS PVT. LTD. · EST. 2000

The Design Collection

SIGNATURE INTERIORS · ENGINEERING · VERTICAL MOBILITY

Engineered to **Elevate**. Designed to **Endure**.

SPANELEVATORS.COM

“An elevator is the one room in a building that every resident will use, and the one most often left unconsidered. We design it as we would any other room — with intent.”

For twenty-five years Span Elevators has built vertical mobility for Indian homes, towers and institutions — pairing engineering measured against the global majors with a craft sensibility that treats every cabin as bespoke. This collection gathers our design language and our specification in a single volume.

CONTENTS

- 01 Who We Are**
Brand, mission and the people behind Span
- 02 The Span Standard**
Engineering, safety and the curated supply chain
- 03 Tailored to Fit**
The material palette and customisation philosophy
- 04 The Signature Collection**
Nine bespoke cabin interiors
- 05 Ārohana LX**
Span Gold home elevators — belt-drive technology and specification
- 06 Span Vertex**
Passenger elevators — configurations and safety
- 07 Span Force**
Goods-cum-passenger, the Bhāravāha Series
- 08 Fixtures — Command, At A Glance**
Landing & car operating panels, Span-engineered
- 09 Safety & Standards**
IS 17900 and the 25 · 0 record

01 — WHO WE ARE

A Comprehensive Vertical-Mobility House.

Span Elevators is a brand built on three commitments held in balance — premiumisation, customisation and safety. Our work extends across passenger and home elevators, goods-cum-passenger systems, escalators, construction elevators and stairlifts, positioning us as a single source for vertical movement of every kind.

We deliver engineering excellence intended to rival the global majors, and we decline the compromises that lower-cost providers accept. Where others standardise, we tailor: sourcing materials and engineering solutions for the specific space, the specific building, the specific client.

Incorporated in the year 2000 under the guidance of Mr. Sunil Tandon — an engineer by profession with over four decades in the industry — Span has steadily pursued the next level of excellence across two-and-a-half decades of installations.

MISSION

To deliver superior vertical-mobility solutions that prioritise safety, customisation and premiumisation — meeting every client's unique needs with excellence.

VISION

To become the leading provider of comprehensive vertical mobility — known for innovative engineering, unparalleled safety and exceptional service.

OUR VALUES

Safety First

Rigorous checks at every stage of every installation.

Customer-Centric Customisation

Solutions tailored to each client.

Commitment to Quality

No compromise on materials or craftsmanship.

Transparency

Open, honest communication throughout.

Dependability

Maintenance and service commitments kept for the long term.

02 — THE SPAN STANDARD

Why Span.

Engineering Supremacy

Cabins and systems engineered to stand level with the premium global majors.

Zero-Incident Safety

Twenty-five years and over 9,500 days of operation without a single safety incident.

Customisation Ability

The freedom to source materials and engineer solutions others cannot.

Premiumisation

A premium fit and finish that lifts both the aesthetic and the functional value.

KEY ACCOMPLISHMENTS

- 01 First Microprocessor Elevator**
Introduced by a non-MNC in North India.
- 02 First Machine-Room-Less (MRL)**
Installed by a non-MNC in North India.
- 03 First High-Rise Elevator**
Delivered by a non-MNC in North India.

THE CURATED SUPPLY CHAIN

Like the most exacting product companies, Span curates rather than compromises — specifying best-in-class machines, ropes, controllers and fixtures from proven partners. A curated component model is an engineering strength, not a limitation.

MACHINES · TECHTRONICS / MONTENARI
 ROPES · USHA MARTIN CONTROL ·
 MONARCH
 FIXTURES · MICROTOUCH

[**25** | **0**]
 YEARS | INCIDENTS

CREDENTIALS · IS 17900 IS 14665 IS 15259
 BIS CERTIFIED CPWD EMPANELLED

03 — TAILORED TO FIT

One Hundred Finishes, And A Way Of Thinking.

Every Span cabin begins as an open question rather than a catalogue number. Walls, ceiling, flooring, lighting, handrail and fixtures are specified independently — then composed into a single coherent interior.

The palette here is a starting point, not a limit. Mirror, hairline and PVD steels; rose-gold and champagne tones; laser-etched and perforated patterns; stone, glass, timber and engineered floors — drawn from more than a hundred material combinations.

Tailored to Fit.



SMOKED
BRONZE



CHAMPAGNE
GOLD



ROSE GOLD



BRUSHED
STEEL



ETCHED
PATTERN



WALNUT
VENEER



TEAK
TIMBER



GOLDEN
ONYX

04 — THE COLLECTION

The Signature Collection

NINE INTERIORS, EACH ENGINEERED AS ONE OF ONE

Designed for the room it serves — not pulled from a factory catalogue.

SPAN SIGNATURE · 01

Eclipse

A Cabin That Holds Its Silence.



Photographed reference cabin. Final finishes confirmed on physical sample.

Smoked-bronze surfaces recede into shadow while a single floating halo of light draws the eye upward — composure rendered in steel, never shouted.

SIDE WALLS	Smoked-bronze mirror panels, hairline detailed
BACK WALL	Smoked-bronze mirror with hairline reveal
CEILING	Suspended back-lit halo, perimeter cove lighting
CONTROLS	Twin slimline COP with integrated displays
HANDRAIL	Brushed bronze
FLOORING	Back-lit golden onyx, framed in dark bronze

1 OF 100+ COMBINATIONS

Tailorable on request

01

SPAN SIGNATURE · 02

Canvas

A Private Gallery That Moves.



Photographed reference cabin. Final finishes confirmed on physical sample.

Reclaimed-walnut walls frame a single commissioned canvas, lit as carefully as the room it serves — art, lighting and timber tuned as one composition.

SIDE WALLS	Rustic walnut veneer with mirror-steel reveals
BACK WALL	Frosted-glass panel hosting framed artwork, interchangeable
LIGHTING	Recessed warm downlights
FLOORING	Engineered oak plank
CHARACTER	Art, light and timber composed as one

1 OF 100+ COMBINATIONS

Tailorable on request

02

SPAN SIGNATURE · 03

Grove

Warmth, Drawn In Straight Lines.



Honey-toned timber runs the length of the cabin, met by a constellation of ceiling light that softens every arrival into the home.

SIDE WALLS Horizontal teak-tone panels in mirror-steel framing

CEILING Hexagonal back-lit array, concealed cove illumination

PORTAL Stone-clad landing surround for a seamless lobby transition

FLOORING Warm engineered timber

HANDRAIL Stainless steel, hairline finish

1 OF 100+ COMBINATIONS

Tailorable on request

Photographed reference cabin. Final finishes confirmed on physical sample.

SPAN SIGNATURE · 04

Prism

Geometry, Caught In Mirror.



Photographed reference cabin. Final finishes confirmed on physical sample.

An interlocking starburst etch fractures the light into facets, turning a short journey into a quiet spectacle of reflection.

SIDE WALLS	Etched mirror-steel panels, radial starburst pattern
BACK WALL	Etched mirror steel, continuous pattern
PORTAL	Polished granite landing surround
CONTROLS	Slimline Span LOP with digital position indicator
FLOORING	Engineered wood

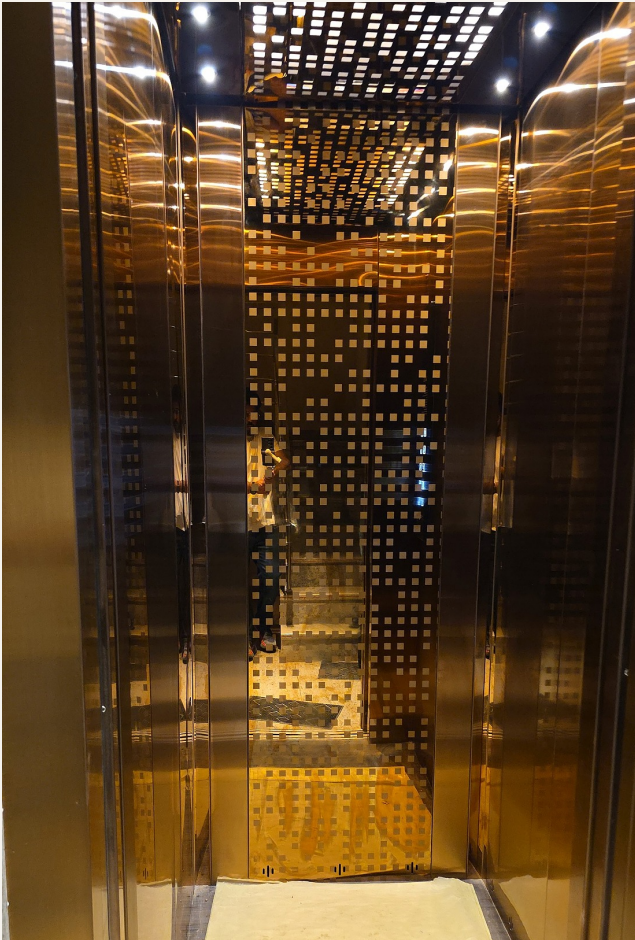
1 OF 100+ COMBINATIONS

Tailorable on request

SPAN SIGNATURE · 05

Aurum

Gold, At Its Quietest.



A pixelated lattice climbs from wall to ceiling, catching light in a thousand small squares without ever raising its voice.

SIDE WALLS	Champagne-gold mirror, laser-perforated pixel lattice
CEILING	Matching perforated panel with concealed LED wash
DETAIL	Continuous gold reveals; bronze-tone trims
FINISH	Anti-fingerprint champagne PVD
HANDRAIL	Champagne-gold, hairline finish

1 OF 100+ COMBINATIONS

Tailorable on request

Photographed reference cabin. Final finishes confirmed on physical sample.

05

SPAN SIGNATURE · 06

Aurelia

Opulent, Without Shouting.



Photographed reference cabin. Final finishes confirmed on physical sample.

Champagne-gold hairline framing a stone-grain marble feature wall, lit by a gold luminous ceiling. The luxury is in the restraint — gold that catches light without glare, marble that carries weight without noise.

CEILING	Champagne-gold hairline steel, linear light
BACK WALL	Stone-grain marble feature, wood and gold trim
SIDE WALLS	Wood grain + mirror steel, decorative strip
FLOORING	Honed marble with bordered inlay
HANDRAIL	Champagne-gold, hairline finish
LIGHTING	Champagne-gold luminous ceiling frame
DOORS	Hairline stainless steel

1 OF 100+ COMBINATIONS

Tailorable on request

06

SPAN SIGNATURE · 07

Manor

Timeless, Residential, Inviting.



Photographed reference cabin. Final finishes confirmed on physical sample.

Deep mahogany colour board against mirror steel, a polished handrail, warm downlights. It feels less like a lift and more like a room of the house that happens to move. Built to look right in twenty years, not just this one.

CEILING	Mirror stainless steel with LED downlights
BACK WALL	Mahogany colour board with mirror-steel frame
SIDE WALLS	Mahogany colour board + mirror steel
FLOORING	Warm-tone marble
HANDRAIL	Mirror stainless steel, round with elbow ends
LIGHTING	Warm-white LED downlights
DOORS	Mahogany colour board

1 OF 100+ COMBINATIONS

Tailorable on request

07

SPAN SIGNATURE · 08

Atelier

Carved By Hand. Not Stamped By A Machine.



Photographed reference cabin. Final finishes confirmed on physical sample.

A hand-carved hardwood relief anchors the rear wall, framed by panelled walnut and a lattice ceiling. This is the cabin for an owner who wants craft they can run a hand across — one panel, one maker, one house.

CEILING	Wood frame with lattice acrylic and downlights
BACK WALL	Hand-carved hardwood relief feature panel
SIDE WALLS	Three-side panelled wood finish
FLOORING	Natural marble with dark border
HANDRAIL	Bronze hairline, polished caps
LIGHTING	Warm LED downlights + recessed ceiling light
DOORS	Bronze hairline stainless steel

1 OF 100+ COMBINATIONS

Tailorable on request

08

SPAN SIGNATURE · 09

Obsidian

Dramatic, Modern, Architectural.



Photographed reference cabin. Final finishes confirmed on physical sample.

Antique bronze, an etched landscape rising across the rear wall, light kept low and concealed. The cabin recedes and the material becomes the architecture. For lobbies and homes already making a statement.

CEILING	Bronze mirror steel with concealed LED
BACK WALL	Antique-bronze board, etched landscape relief
SIDE WALLS	Bronze carved board
FLOORING	Dark marble, honed
HANDRAIL	Bronze hairline stainless steel
LIGHTING	Concealed cove + recessed downlights
DOORS	Antique-bronze hairline stainless steel

1 OF 100+ COMBINATIONS

Tailorable on request

09



05 — SPAN GOLD · HOME ELEVATORS

Ārohana LX

BELT-DRIVE HOME ELEVATOR

The home elevator, considered as architecture. The Ārohana LX brings the quiet, the compactness and the finish of a flagship cabin into the private residence — engineered to disappear into the home until the moment it is needed.

Built on a machine-room-less, gearless belt-drive platform with VVVF microprocessor control, it runs smoothly within a modest footprint, with shallow-pit options for retrofit. Home installations are governed by IS 15259.

DRIVE

MRL gearless belt-drive

CONTROL

VVVF microprocessor

CAPACITY

272 kg · 4 persons

SPEED

0.2 m/s

TRAVEL

Up to 12 m

DOORS

Telescopic / centre-opening

PIT

Shallow-pit · 200 mm

STANDARD

IS 15259

- COMPLIANT WITH IS 17900

Figures describe the Ārohana LX; final dimensions confirmed by an on-site survey.

05 — SPAN GOLD · TECHNOLOGY

Engineered Around The Belt.

THE ĀROHANA LX · BELT-DRIVE HOME ELEVATOR

WHY BELT-DRIVE

The Ārohana LX replaces conventional steel ropes and geared machines with a flat-belt, permanent-magnet drive — the quietest, cleanest way to move a home cabin, and the reason the lift all but disappears into the house.

Smooth & Silent

Flat polyurethane-coated belts run whisper-quiet and free of vibration.

Energy-Efficient

A gearless, low-inertia permanent-magnet machine draws less power and lowers running cost.

Eco-Friendly

No lubrication and no oil — a cleaner machine space and less maintenance.

Smart Safety Monitoring

An advanced belt-control system watches the drive continuously.

Space-Saving

The machine mounts on the guide rails, placing minimal load on the building structure.



PERMANENT-MAGNET, GEARLESS — THE FLAT-BELT TRACTION MACHINE

PDSS · Pre-Designed Structure Shaft

A ready-to-install, pre-engineered steel shaft for retrofit. It fits tight sites, preserves the existing structure and installs fast — with minimal building work.

25 | **0**
YEARS | INCIDENTS

05 — ĀROHANA LX · SPECIFICATION

Specification.

BELT-DRIVE HOME ELEVATOR · 4 PERSONS / 272 KG

TECHNICAL SPECIFICATION

RATED LOAD	272 kg · 4 persons
RATED SPEED	0.2 m/s
TRAVEL	Up to 12 m
DRIVE	MRL electric traction, gearless
MACHINE	Permanent-magnet synchronous
CONTROLLER	Integrated VVVF
DOORS	Telescopic or centre-opening, automatic
POWER	Single-phase, 230 V / 50 Hz
OPERATING PANEL	Micro push-button (landing & car)
DISPLAY	Dot-matrix position indicator
DOOR SENSOR	Multi-beam infrared
CAR INTERIOR	SS false ceiling with LED; PVC-mat flooring
SAFETY	ARD, emergency light and floor announcer
COMPLIANCE	Fully BIS compliant; home lifts to IS 15259

CAR & SHAFT DIMENSIONS

CONFIGURATION	LIFT WELL W×D	CAR W×D	ENTRANCE
Telescopic	1200 × 1400	630 × 1050	600
Telescopic	1350 × 1400	750 × 1050	700
Centre-opening	1400 × 1400	800 × 1050	600
Centre-opening	1500 × 1400	900 × 950	700

All dimensions in millimetres. Pit depth 200 mm · Overhead clearance 3000 mm.

OPTIONAL UPGRADES

Handrails	Dual entrance	Touch buttons
Overload warning	TFT COP	

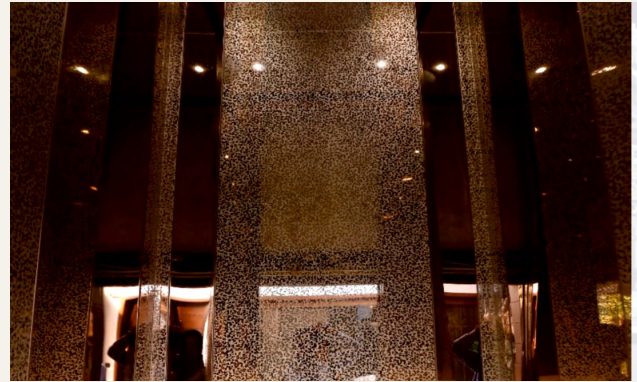
05 — SPAN GOLD · CABIN DESIGNS

A Library Of Finishes, Drawn From Installed Work.



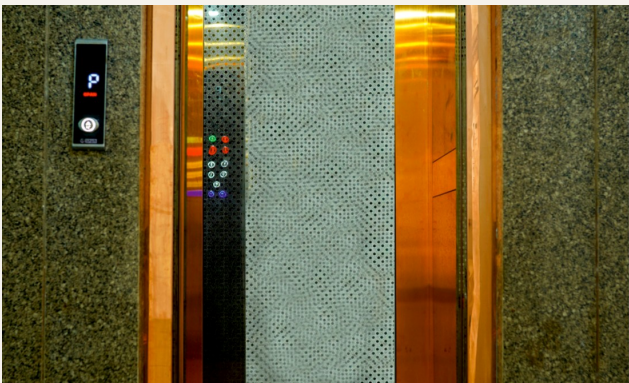
■ SGS-01

CEILING	SS rose gold, mirror finish
SIDE WALLS	Rose gold mirror, hairline centre panel
BACK WALL	Black floral pattern, rose-gold hairline
LIGHT	LED
FLOORING	Marble
HANDRAIL	Rose gold, hairline finish



■ SGS-02

CEILING	SS rose gold, mirror finish
SIDE WALLS	Rose gold mirror, designer centre panel
BACK WALL	Designer rose-gold panel, rose-gold mirror
LIGHT	LED
FLOORING	Marble
HANDRAIL	Optional



■ SGS-03

CEILING	SS rose gold, mirror finish
SIDE WALLS	Rose gold panel, mirror finish
BACK WALL	Black hex pattern, rose-gold mirror
LIGHT	LED
FLOORING	Vinyl
HANDRAIL	Optional



■ SGS-04

CEILING	SS gold, mirror finish
SIDE WALLS	Rose gold, designer finish
BACK WALL	Gold designer finish, reverse opening
LIGHT	LED
FLOORING	Vinyl
HANDRAIL	Optional

05 — SPAN GOLD · INSTALLATIONS

Gold In The Lobby, And On Every Landing.

The Gold finish carries beyond the cabin — into the lift lobby, the landing surround and the façade of the shaft, so the arrival reads as one composed material story from the moment the doors are seen.



■ Structural-Glass Shaft

SETTING	Showroom · glass-enclosed shaft
CABIN	Mirror-gold, hairline finish
SHAFT	Toughened structural glass, gold portal frames
SURROUND	Fluted black panel & marble feature
FLOORING	Polished porcelain landing



■ Marble Lobby Bank

SETTING	Commercial lobby · twin-lift bank
CABIN	Bronze-gold mirror, centre-opening
SURROUND	Agate stone cladding with brass inlay
FLOORING	Honed marble
HANDRAIL	Bronze-gold, hairline

Every finish above is a starting point — composed, never copied.

06 — PRODUCT FAMILY

Span Vertex

PASSENGER ELEVATORS

Engineered for offices, high-rise residences, malls, metros and hospitals — where safety is built in, not added on. Span Vertex pairs dependable traction performance with the full design vocabulary of the Signature Collection.

- COMPLIANT WITH IS 17900

STANDARD CONFIGURATIONS

MINIMUM CIVIL DIMENSIONS, IN MILLIMETRES

LOAD (P / KG)	SPEED (M/S)	SHAFT A×B	CAR C×D	ENT. E
5 / 340	0.7	1500 × 1500	1100 × 900	700
8 / 544	0.7 / 1.0	1600 × 1800	1200 × 1200	800
10 / 680	1.0 / 1.5	1800 × 1850	1400 × 1250	800
13 / 884	1.0 / 1.5	2400 × 1750	2000 × 1100	900
20 / 1360	1.5	2500 × 2400	2000 × 1550	1000



06 — SPAN VERTEX · CIVIL & ELECTRICAL

Site & Power Requirements.

INSTALLATION STANDARDS

HOISTWAY WALLS	Min. 150 mm RCC or 230 mm brick
MACHINE-ROOM SLAB	150 mm thick RCC
SLAB LOAD	1500 kg/sq.m uniform + reaction loads
WEATHER	Protection required for all equipment

VERTICAL REQUIREMENTS

SPEED	PIT DEPTH	HEADROOM
Up to 0.7 m/s	1350 mm	4300 mm
0.7 – 1.0 m/s	1500 mm	4300 mm
Up to 1.5 m/s	1600 mm	4800 mm

ELECTRICAL

MAIN POWER	415 V, 3-phase, 4-wire with ELCB
AUXILIARY	5 A, 230 V single-phase ELCB
ELCB	One per elevator (fan & light circuits)

SAFETY AS STANDARD

BUILT INTO EVERY SPAN VERTEX — NOT OPTIONAL

- Multi-beam IR door sensor
- Auto Rescue Device (ARD)
- Emergency intercom
- Floor announcer
- Overload warning device
- BIS & ISO certified

IDEAL FOR

COMMERCIAL
Office Buildings

RESIDENTIAL
High-rise Towers

PUBLIC
Malls & Metros

HEALTHCARE
Hospitals

07 — PRODUCT FAMILY

Span Force

GOODS-CUM-PASSENGER · BHĀRAVĀHA SERIES

Strength. Duty. Unyielding Reliability.

Heavy-duty freight engineered for warehouses, manufacturing plants and logistics hubs — built on a dual-use philosophy that moves both goods and people safely in a single shaft.

Why install two elevators when one performs both duties? The Bhāravāha Series removes the need for separate goods and passenger lifts — delivering up to 40% cost savings against dual installations, with no compromise on safety or compliance.

DRIVE

VVVF closed-loop · up to 36% energy saving

MACHINE

Geared or gearless traction

CAPACITY

500 – 5000 kg

CABIN

MS painted / powder-coated · SS for pharma & food

FLOORING

Heavy-duty checkered plate

DOORS

Manual collapsible / auto 2–6 panel

- COMPLIANT WITH IS 17900

07 — SPAN FORCE · SIZING

Standard Dimensions.

ALL DIMENSIONS IN MM; LOAD IN KG. FINAL DIMENSIONS VARY WITH SITE CONDITIONS AND DOOR CONFIGURATION.

MANUAL DOOR

KG	SHAFT W	SHAFT D	CAR W	CAR D	ENT W	ENT H
500	1800	1600	1100	1200	1000	2000
750	1900	2000	1200	1600	1000	2000
1000	2100	2200	1400	1800	1300	2000
1500	2100	2400	1700	2000	1500	2000
2000	2400	2900	1700	2500	1600	2000
2500	2500	2900	2000	2500	1800	2500
3000	2800	3100	2000	3000	1800	2400
4000	2900	3400	2500	3500	2200	2400
5000	3400	4100	2600	4000	2300	2400

AUTO DOOR — TELESCOPIC

KG	SHAFT W	SHAFT D	CAR W	CAR D	ENT W	ENT H
500	1650	1700	1100	1200	1000	2000
750	1950	2100	1200	1600	1000	2000
1000	2200	2300	1400	1800	1200	2000
1500	2500	2500	1700	2000	1500	2000
2000	2700	3000	1700	2500	1600	2000
2500	3000	3000	2000	2500	1800	2000
3000	3200	3500	2000	3000	2000	2100
4000	3500	4000	2500	3500	2200	2100
5000	3700	4500	2600	4000	2400	2400

CIVIL & STRUCTURAL

Shaft clear of obstructions, plumb to ± 25 mm, in RCC or load-bearing steel. Pit watertight; depth 1600–2150 mm for 0.5–1.5 m/s. Machine room above the shaft (geared) or control space (MRL).

ELECTRICAL & SAFETY

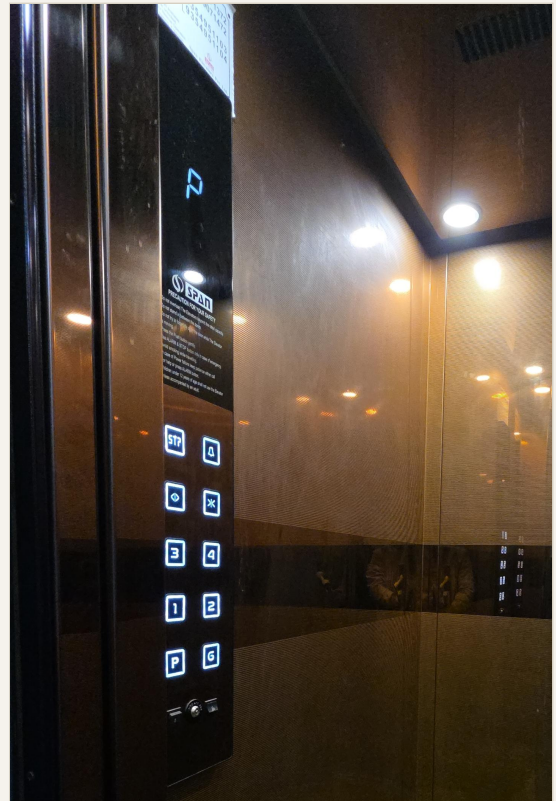
Stable 3-phase 415 V supply with independent neutral; two distinct earthings; ELCB protection. Overspeed governor arrests free-fall beyond 20% of rated speed; Auto Rescue Device and dual mechanical-electrical arrests standard. Fire-rated configuration available.

08 — FIXTURES · LOP & COP

Command, At A Glance.

LANDING & CAR OPERATING PANELS · SPAN
TOUCH SERIES

A resident touches the panel more than any other part of the lift, so it earns the same engineering as the cabin around it — a fascia set flush, backlighting tuned to read at a glance, a press that answers without hesitation. The control is where confidence is felt, before the doors ever close.



The Graphite control, installed — a Span smoked-bronze cabin. Photographed on site.



SCP-01 · SLP-01

Graphite

Etched-black fascia, square back-lit keys — the standard fitted to the cabin above.



SCP-02 · SLP-02

Slate

Textured graphite with a full numeric keypad, for high-rise traffic.



● COMPLIANT WITH IS
17900

08 — FIXTURES · THE RANGE

The Touch Range.

SPECIFY THE CONTROL — FINISH, TIER AND DISPLAY

Every Span control is specified, not defaulted. Choose the fascia, the press and the read-out the building asks for — from a quiet residential panel to a full capacitive-touch face with a live TFT display.



SCP-03

Ivory

SEMI-TOUCH

White fascia, round back-lit buttons — a clean residential read.



SCP-04

Mirror Glass

PREMIUM-PLUS

Tempered-glass face, capacitive touch and a colour TFT.



SCP-05

Onyx Touch

PREMIUM-PLUS

Full touch keypad and a live TFT scene on black glass.



SCP-06

Brushed Silver

PREMIUM-PLUS

Hairline-steel face, touch keys and a segment display.

TIERS

Semi-Touch · Premium-Plus · Victor — micro push through full capacitive touch.

DISPLAYS

Seven-segment · dot-matrix · colour TFT, with floor scenes on request.

FINISHES

Graphite, slate, ivory, mirror glass, marble and brushed steel.

09 — SAFETY & STANDARDS

Compliant With IS 17900.

IS 17900 is India's unified elevator safety standard — mandatory from 21 December 2025, superseding IS 14665, IS 15785 and IS 14671. Every Span proposal is engineered to comply.

- Unintended Car Movement (UCM) protection and re-leveling safeguards
- Ascending-car overspeed governance
- Door monitoring at trip start
- Auto Rescue Device for safe evacuation on power loss
- Fire and electrical safeguards, including RCBO
- Extended emergency lighting and PESSRAL programmable safety
- Technician-safety provisions throughout the shaft and machine space

STANDARDS WE BUILD TO

IS 17900	Unified elevator safety (current)
IS 14665	Electric traction passenger lifts
IS 15259	Home lifts
BIS	Bureau of Indian Standards certified
CPWD	Empanelled

25 | **0**
YEARS | INCIDENTS

**A Safety Record
Unbroken Since
2000.**

ACROSS EVERY INSTALLATION · 9,500+ DAYS



BEGIN THE CONVERSATION

Let Us Design Your Cabin.

Engineered to **Elevate.**

Designed to **Endure.**

HEAD OFFICE

12, First Floor, Deep Cinema Complex
39 Central Market, Ashok Vihar
Delhi — 110052

CONNECT

+91 98106 12213
yajvin@spanelevators.com
spanelevators.com

[**25** | **0**]
YEARS | INCIDENTS

INSTAGRAM @SPANELEVATOR · LINKEDIN /COMPANY/SPAN-ELEVATORS-PVT-LTD

© 2026 SPAN ELEVATORS PVT. LTD. · SPECIFICATIONS SUBJECT TO CHANGE · IMAGES ARE REPRESENTATIVE